

Практические упражнения.

Как только ученик приобрел достаточное знакомство с инструментом и легко берет 8 открытых тонов, он может употреблять клапаны.

Считай: 1 2 3 4 1 2 3 4

1. 

2. 

3. 

4. 

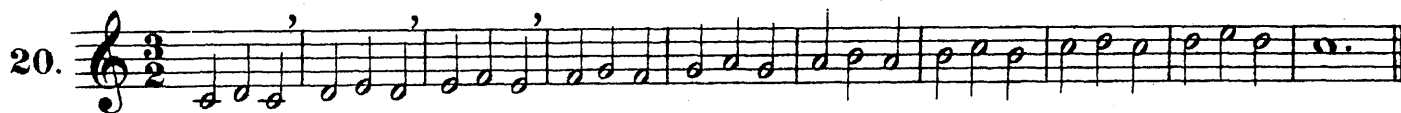
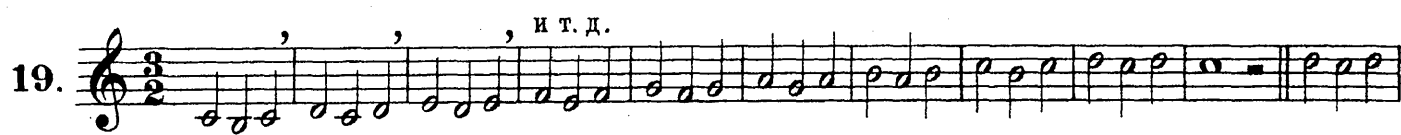
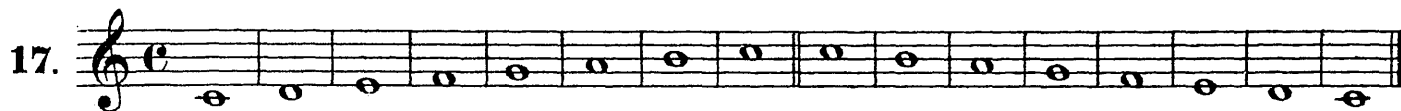
5. 

6. 





Упражнения в секундах.



23. *Andante.*

24.

25.

26. *Andantino.*

Брать тоны четко.

27.

Moderato.

28.

Allegretto.

29.

Andante.

30.

31.

32. **Allegretto.**

33. **Moderato.**

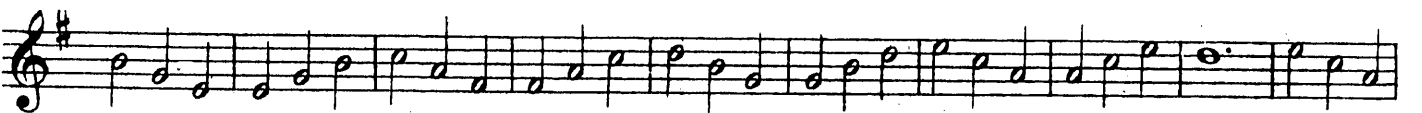
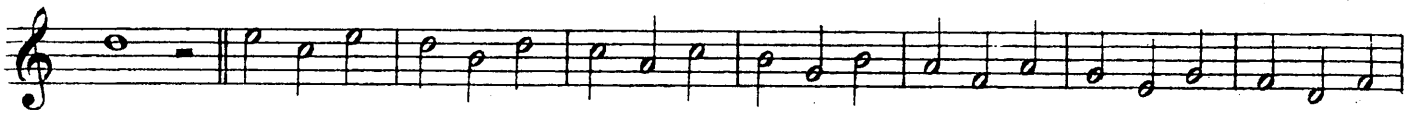
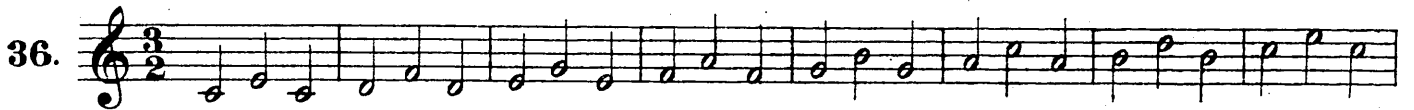
1. 2. 3.

34.

Легато должно выходить полно и непринужденно. Оно легко удается, если приходится связывать открытый тон с клапанным; труднее, если нужно связать 2 открытых тона или 2 тона на одном клапане. При движении вверх *legato* получается при большом сжатии губ; при этом надо произносить беззвучно слог „дай“. При движении вниз губы следует ослабить и произносить „диа“.

Упражнения в терциях.

a) *staccato* b) *legato*
 а) стаккато б) легато



C-dur. До-мажор.

Каждую гамму 8 раз.

A-moll. Ля-минор.



G-dur. Соль-мажор.

E-moll. Ми-минор.



F-dur. Фа-мажор.

D-moll. Ре-минор.



B-dur. Сиб-мажор.

G-moll. Соль-минор.



Moderato.



Andante.



42.

43. *Andante con moto,*
p

44. *Andante. Каждую ноту резко выделять.*
sf sf sf sf sf sf sf sf sf



48.

Упражнения в кварттах.

49.

50.

51.

a) *sforzato*, b) *legato*,

52.

53.

D-dur. Ре-мажор.
Каждый такт 8 раз.

H-moll. Си-минор.

54.

A-dur. Ля-мажор.

Fis-moll. Фа#-минор.

Es-dur. Миb-мажор.

C-moll. До-минор.

As-dur. Ляb-мажор.

F-moll. Фа-минор.

1. Adagio. 2. Allegro. 3. 4. 5. 6. 7. 8. 9.

Каждый такт 8 раз.

55.

Каждый такт 8 раз.

56. 

57. 

58. 

Andante quasi Allegretto.

59.

Allegro moderato.

60.

Andante.

61.

Da Capo al Fine

Allegretto.

62.

Allegretto.

63.

По 51 и 52.

1. 2. 3. 4. 5. 6. 7. 8. 9. 10. 11. 12.

ff *pp* *mf*

Allegro moderato.

64. 






















Упражнения в квинтах.

65.  Musical staff 65, first line. Treble clef, key signature of one flat (B-flat), common time signature (C). The staff contains a sequence of eighth notes and quarter notes, starting with a dotted quarter note followed by an eighth note, then a quarter note, and so on, ending with a double bar line.

 Musical staff 65, second line. Treble clef, key signature of one flat, common time. The staff contains a sequence of eighth notes and quarter notes, ending with a double bar line. To the right of the staff are three first endings, numbered 1, 2, and 3. Each ending consists of a few notes with dynamic markings: *ff*, *p*, and *p > f > p*.

66.  Musical staff 66, first line. Treble clef, key signature of one flat, common time signature (C). The staff contains a sequence of eighth notes and quarter notes, ending with a double bar line.

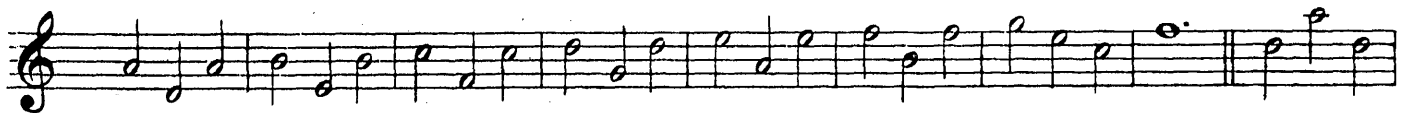
 Musical staff 66, second line. Treble clef, key signature of one flat, common time. The staff contains a sequence of eighth notes and quarter notes, ending with a double bar line. To the right of the staff are two first endings, numbered 1 and 2. Each ending consists of a few notes with dynamic markings: *ff* and *f*.

67.  Musical staff 67, first line. Treble clef, key signature of one flat, 3/2 time signature. The staff contains a sequence of eighth notes and quarter notes, ending with a double bar line.

 Musical staff 67, second line. Treble clef, key signature of one flat, 3/2 time. The staff contains a sequence of eighth notes and quarter notes, ending with a double bar line.

 Musical staff 67, third line. Treble clef, key signature of one flat, 3/2 time. The staff contains a sequence of eighth notes and quarter notes, ending with a double bar line.

 Musical staff 67, fourth line. Treble clef, key signature of one flat, 3/2 time. The staff contains a sequence of eighth notes and quarter notes, ending with a double bar line.

 Musical staff 67, fifth line. Treble clef, key signature of one flat, 3/2 time. The staff contains a sequence of eighth notes and quarter notes, ending with a double bar line.

 Musical staff 67, sixth line. Treble clef, key signature of one flat, 3/2 time. The staff contains a sequence of eighth notes and quarter notes, ending with a double bar line.

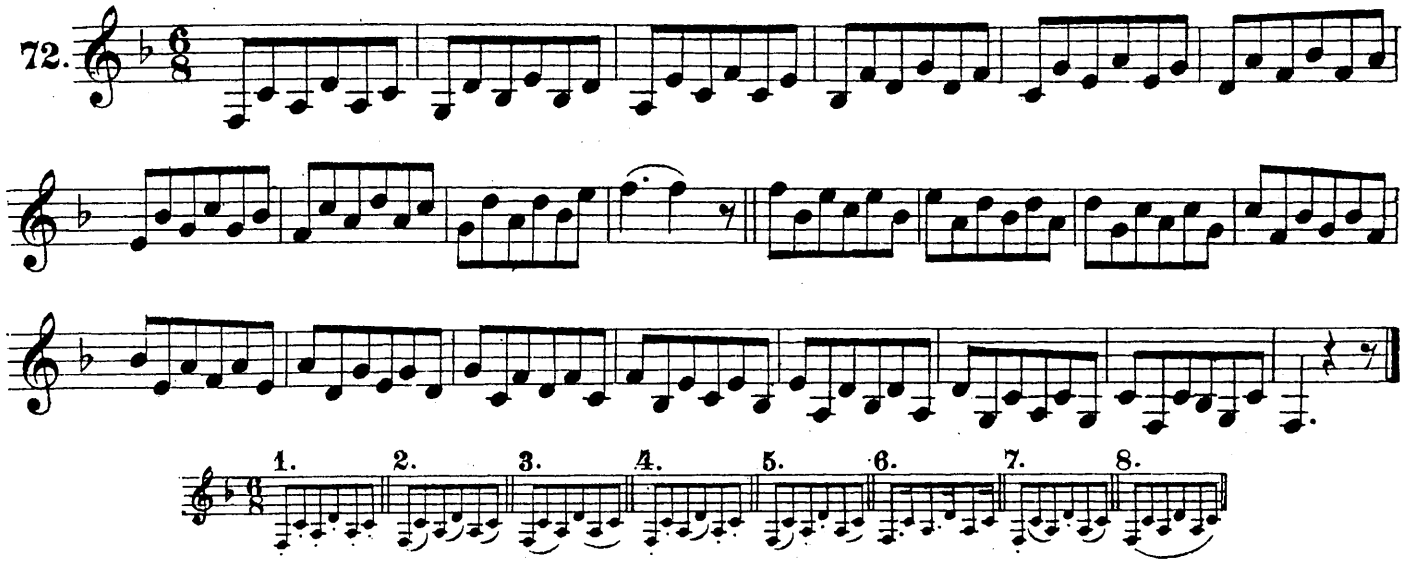
 Musical staff 67, seventh line. Treble clef, key signature of one flat, 3/2 time. The staff contains a sequence of eighth notes and quarter notes, ending with a double bar line. To the right of the staff are three first endings, numbered 1, 2, and 3. Each ending consists of a few notes with dynamic markings: *ff*, *f*, *p*, and *p > f > p*.

68.

69.

70. 8 раз.

71.

72. 

73. 

8 paz.
74. 

Moderato.

75. *p* *mf* *p* *poco a* *poco cresc.* *ff* *Fine* *p dolce* *pp* *p* *dolce* *mf* *ff* *D.Capo al Fine.*

Allegro.

76. *p* *f* *p* *f* *f*

♩ Allegro risoluto.

77. *f* *mf* *f*

Meno.

p dolce *f* *Fine. fff* *ppp* *ff* *mf*

Trio D.C. al Fine e poi D.C. sim al \oplus e Coda.

CODA.

p meno mosso